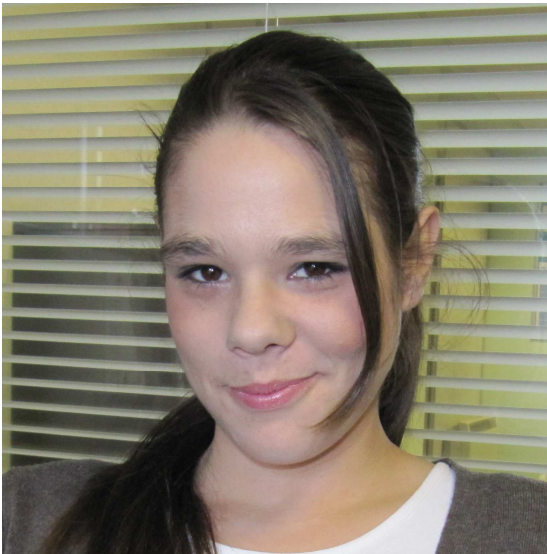


Childcare and Health and Social Care Learning throughout the Eastern Region

## Vocational Training Services Case Study



### Gemma Watkinson Health and Social Care

**Gemma lives in Southend, Essex and is currently undertaking VTS's City and Guilds Level 2 Certificate in Preparing to Work in Adult Social Care.**

This qualification is designed to provide an ideal taster for learners who may be new to the sector or new to the world of work.

Successful completion provides an opportunity for progression into employment in the care sector, for example working in a residential care or nursing home.

Gemma (23) attended Cornelius Vermuyden School on Canvey Island and achieved ASDAN, Maths and English qualifications. She has had some experience working in Basildon Hospital as a clinical support worker, which she enjoyed.

Gemma wants to work in care as she has had recent personal experience of helping close family members with Aspergers syndrome. Although she found this experience challenging, she learned a lot and it made her realise that the caring profession is where her future lies.

**Gemma says: "VTS's course is so much better than I expected. I really like the small group I am in, which has gelled really well over the last few weeks. Suzanne is an excellent teacher, very approachable and knowledgeable. Overall, I think the course is brilliant, and I am sure it will help me get a new career in care".**

#### **Gemma's Tutor, Suzanne, said:**

"Gemma is a pleasure to work with as she is so enthusiastic and dedicated. She is genuinely interested in the subject and works hard to achieve her objectives. I am sure a career in Health and Social Care awaits her and I wholeheartedly recommend her to any employer"



**For more information on training with VTS, please contact:**

**Vocational Training Services, Chalkwell Lawns, 648-656 London Road, Westcliff-on-Sea, Essex, SS0 9HR.**

**Tel: 01702 353 557 E-mail: [info@vts.ac.uk](mailto:info@vts.ac.uk) Web: [www.vts.ac.uk](http://www.vts.ac.uk) Fax: 01702 351688**